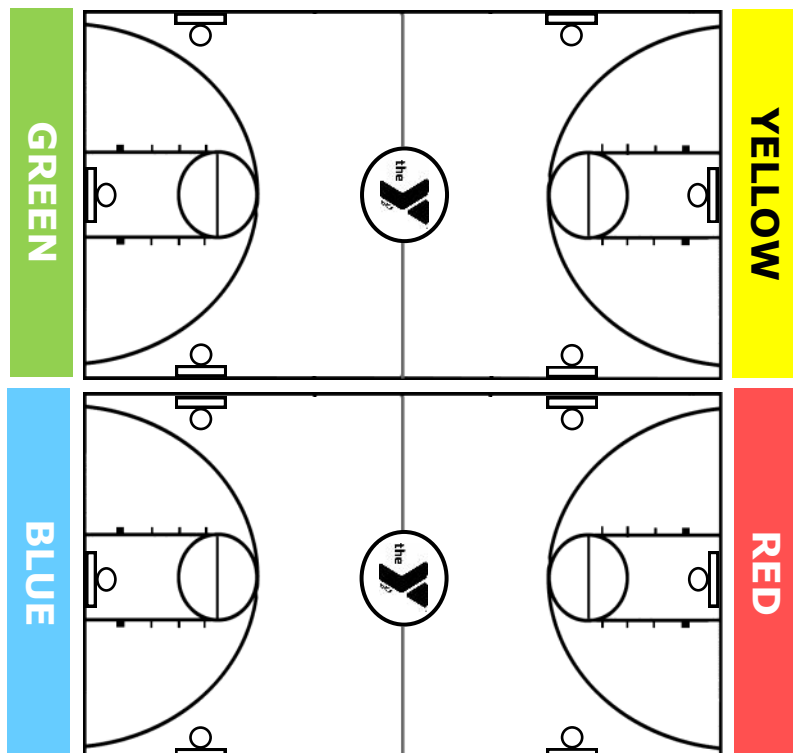




# Gym Schedule (December 16-February 3)

Mon	Tue	Wed	Thu	Fri	Sat	Sun
Open Gym 5:00a - 7:00a (1/4)* 7:00a - 8:00a (Full)	Open Gym 5:00a - 8:00a (Full)	Open Gym 5:00a - 7:00a (1/4)* 7:00a - 8:00a (Full)	Open Gym 5:00a - 8:00a (Full)	Open Gym 5:00a - 7:00a (1/4)* 7:00a - 8:00a (Full)	Valpo YMCA Opens 7am	Valpo YMCA Opens 11 am
Open Gym 8:00 - 11:00 (1/4)	Open Gym 8:00 - 10:30 (1/2)	Open Gym 8:00 - 11:00 (1/4)	Open Gym 8:00 - 11:00 (1/2)	Open Gym 8:00 - 11:00 (1/4)	Open Gym 7:00am- 6:00pm (Full)	
Preschool 8:00 - 10:55 (Yellow & Red)	Preschool 8:00 - 10:30 (Green & Yellow)	Preschool 8:00 - 10:55 (Yellow & Red)	Preschool 8:00 - 10:55 (Green & Yellow)	Preschool 8:00 - 10:55 (Yellow & Red)		Open Gym 11:00 - 2:00 (1/2)
Pickleball 8:00-11:00 (1/4)	Open Gym 10:30a - 3:00p (1/4)	Pickleball 8:00-11:00 (1/4)	Open Gym 10:30a - 3:00p (1/4)	Pickleball 8:00-11:00 (1/4)		
Open Gym 11:00 - 3:00 (Full)	Pickleball 10:30a - 3:00p (1/2) (Green/Yellow)	Open Gym 11:00-3:00 (Full)	Pickleball 10:30a - 1:30p (1/2) (G/Y)	Open Gym 11:00 - 3:00 (Full)		Pickleball 11:00 - 2:00 (1/2) (Green/Yellow)
Adaptive Rec 3:00-4:00 (Blue & Red)			*Instructional Pickleball (1/4) 1:30-3:00			
Open Gym 3:00 - 5:00 (1/2)	Open Gym 3:00 - 5:00 (1/4)	Open Gym 3:00 - 5:00 (1/2)	Open Gym 3:00 - 5:00 (1/4)	Open Gym 3:00 - 5:00 (1/2)		Open Gym 2:00p - 6:00p (Full)
Preschool 3:00 - 5:00 (Yellow)	Preschool 3:00 - 5:00 (Green & Yellow)	Preschool 3:00 - 5:00 (Green & Yellow)	Preschool 3:00 - 5:00 (Green & Yellow)	Preschool 3:00 - 5:00 (Green & Yellow)		
Afterschool 4:30 - 5:00 (Green)	Afterschool 4:30 - 5:00 (Green)	Afterschool 4:30 - 5:00 (Green)	Afterschool 4:00 - 5:00 (Green)	Afterschool 4:30 - 5:00 (Green)		
Open Gym 5:00p - 10:00p (Full)	DK Basketball Group Training 4:00-5:00	Open Gym 5:00p - 10:00p (Full)	DK Basketball Group Training 4:00-5:00	Open Gym 5:00 - 6:00 (Full)		
	COED Adult Volleyball 6:00 - 10:00p (Green & Yellow)		Valpo YMCA Closed After 6pm	COED Adult Volleyball 6:00-10:00p (Green & Yellow)		
	Open Gym 5:00-6:00 (Full) 6:00-10:00p (1/2)			Valpo YMCA Closed After 6pm		



## GYM RULES:

- No hanging on nets or rims.
- No foul language.
- No drinks, gum or food inside gym.
- Appropriate attire and footwear required at all times.
- Gym bags should be stored in a locker
- Please return all basketballs.

## RESERVATIONS:

- \*Pickleball will be using 1 court from 5:00 am to 7:00 am on Mondays, Wednesdays and Fridays
- \*Men's Full-court bball M,W,F from 5:30a-6:30a (1/2)
- \*Instructional pickleball-please contact Kevin (Sport Director) for an appointment
- **M/W/F 11:30-1:30 private group (1/2)**

Courts not assigned on the schedule are OPEN.  
Full court B-Ball will be permitted ONLY when space allows.  
Schedule is subject to change without advance notice.